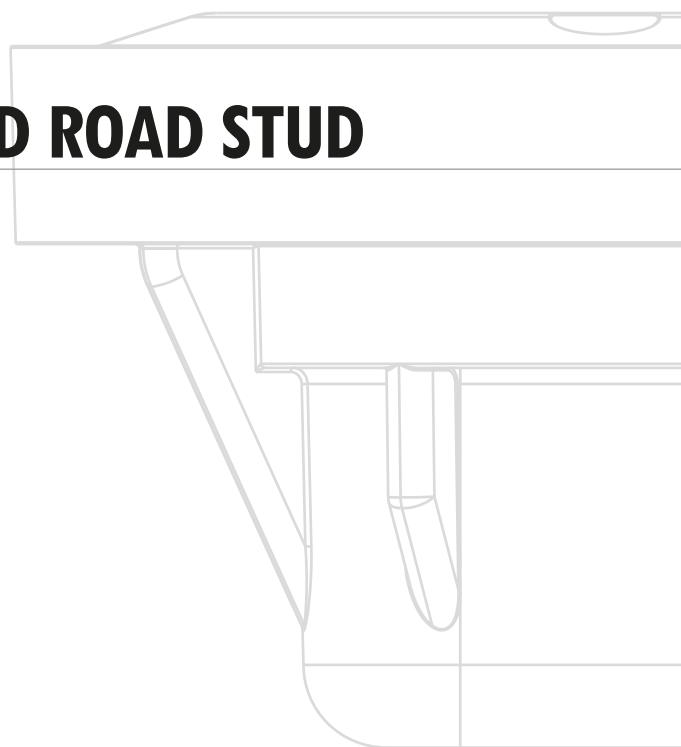


**STAINLESS STEEL HARDWIRED ROAD STUD**  
YOUR SAFETY EYES



# SR-50



## STAINLESS STEEL HARDWIRED ROAD STUD

### KEY FEATURES

- Robust construction, suitable for harsh conditions
- Snow plough resistant
- Ultra brightness road stud with high power LEDs
- Up to 8 power LEDs (1W) with internal lens, providing a high light intensity
- Specially developed heat sink to increase LEDs lifetime
- High brightness day or night
- Possibility of integration with control traffic devices
- Suitable for applications in roads, tunnels, parks and airports
- Communication protocol by request
- Hardwired system for solar or electrical applications
- Low maintenance
- Possibility of rotation after installation
- Only 4mm height above road surface
- Operation Mode: Always on, Flashing, Sequential

### SPECIFICATIONS:

#### ELECTRICAL

Power Supply: 12Vdc or 24Vdc

Led Constant Current: 350mA

#### OPTICAL

LEDs Number: Up to 8 power LEDs

LEDs Colour: Amber, Red, White, Blue, Green

LEDs Configuration: Uni-directional or bi-directional light - possibility of using different LED colors on each side

#### MECHANICAL

Dimensions:  $\varnothing$  144 x 89 mm

Projection: 4 mm

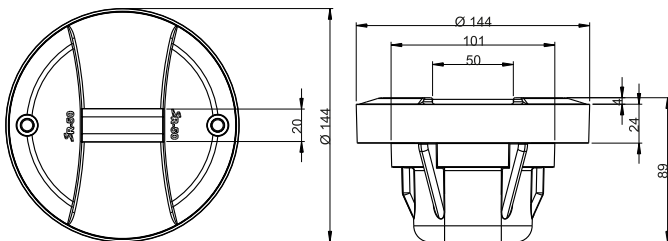
Minimum Installation Depth: 95 mm

Bottom Part Material: Aluminium

Cap Material: Stainless Steel League

Mechanical Resistance: 160 Tons

Protection Index: IP68 and IK10



Dimensions: mm



Quinta do Carreiro, Lote 9/14 - Frossos  
4700-154 Braga - Portugal  
TEL.: +351 253 300 440 | FAX: +351 253 300 449  
E-MAIL: sernis@sernis.com | SITE: www.sernis.com